

---

# How to connect - Mac OS X

---



## Mac OS X configuration

This manual describes how to connect Apple computers into eduroam WiFi network. **For Charles University in Prague students and staff only.**

Your eduroam username is **personal\_number@cuni.cz**. You can set your eduroam password at [CAS](#) service.

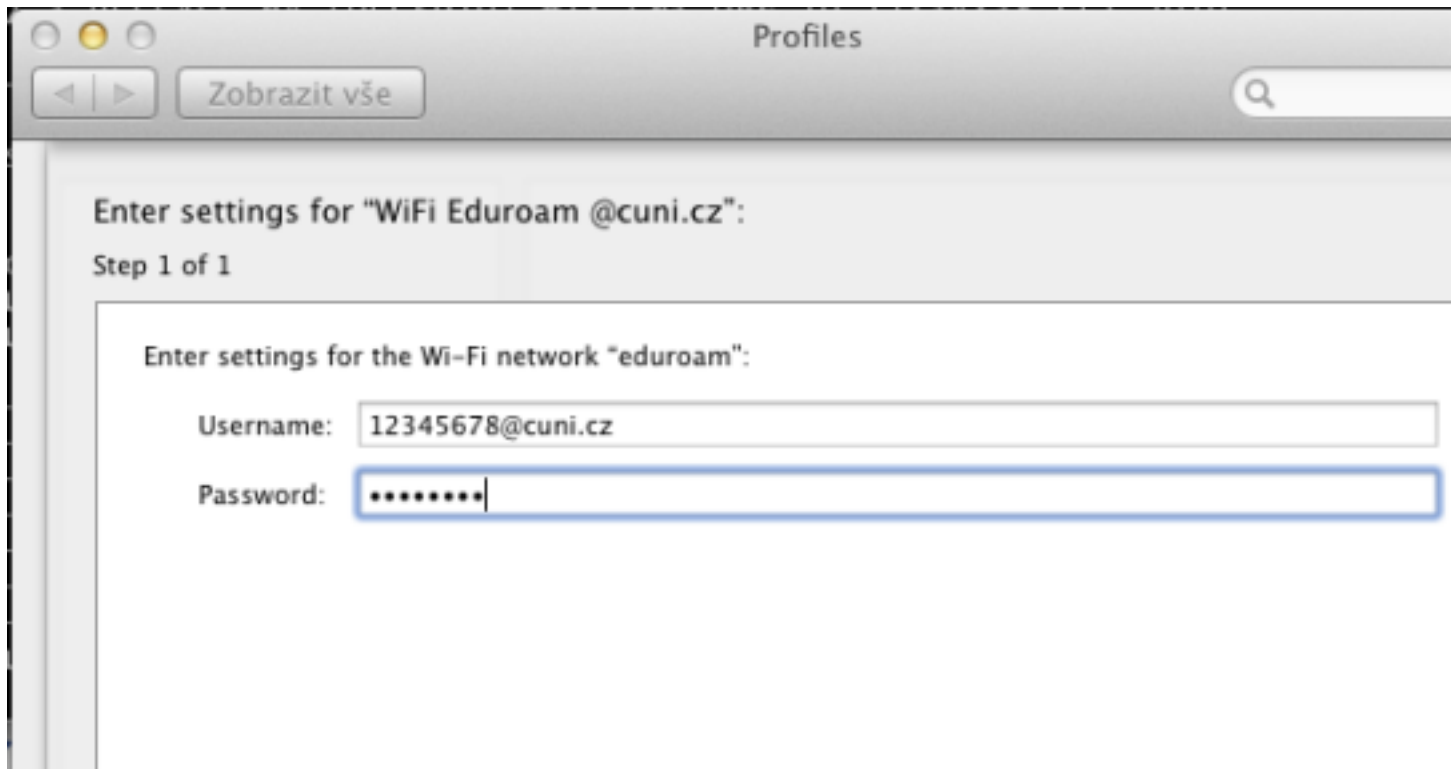
This manual is also valid for login names with [@uvtuk.cuni.cz](#) a [@jinonice.cuni.cz](#).

**If you received e-mail with subject "eduroam - změna certifikátu / certificate change":  
no necessary to change your Mac configuration!**

## Setup for Mac OS X Lion

Download and install a profile published at: [http://uvt1.cuni.cz/e/profil\\_cuni\\_cz.mobileconfig](http://uvt1.cuni.cz/e/profil_cuni_cz.mobileconfig)





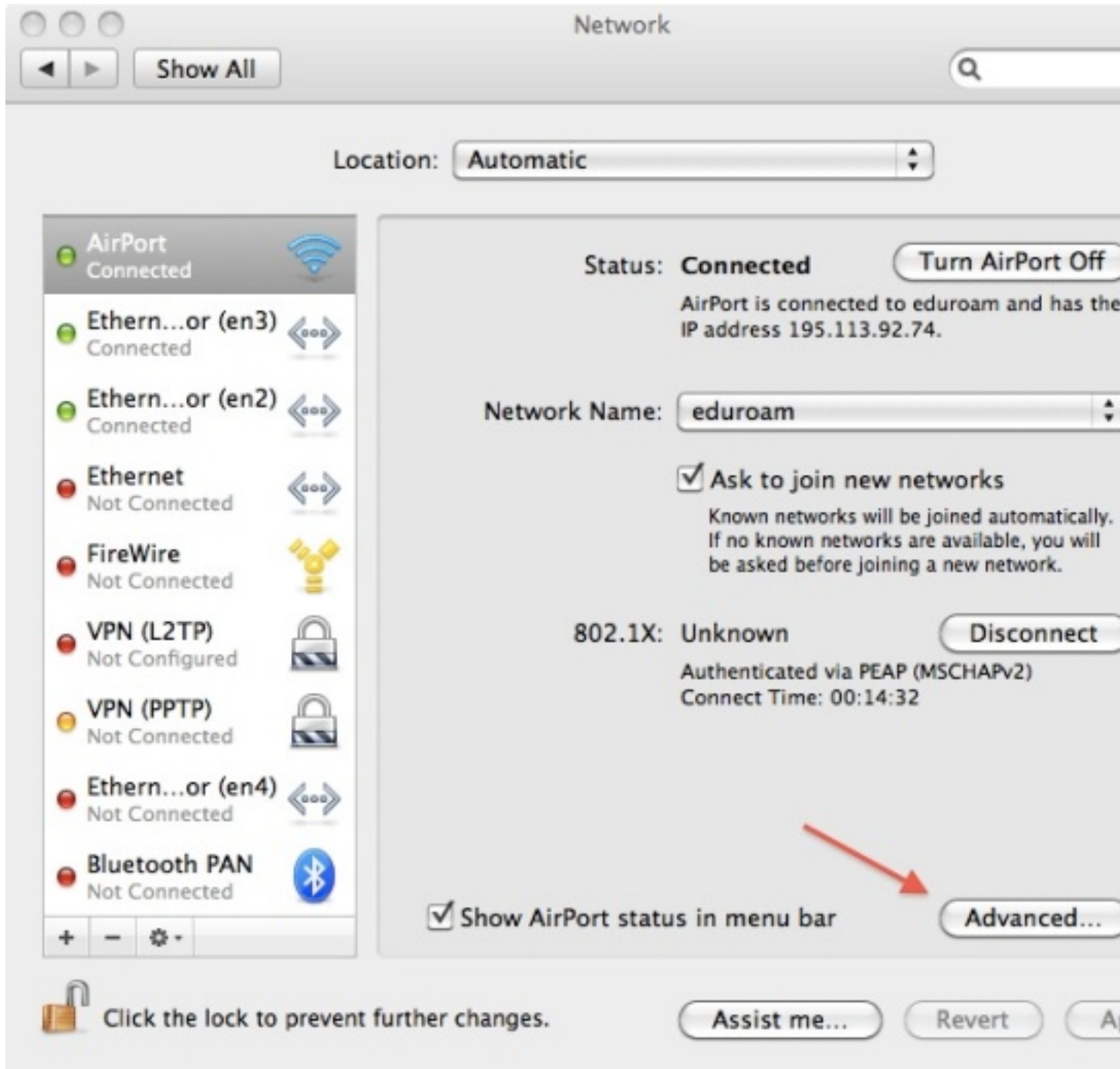


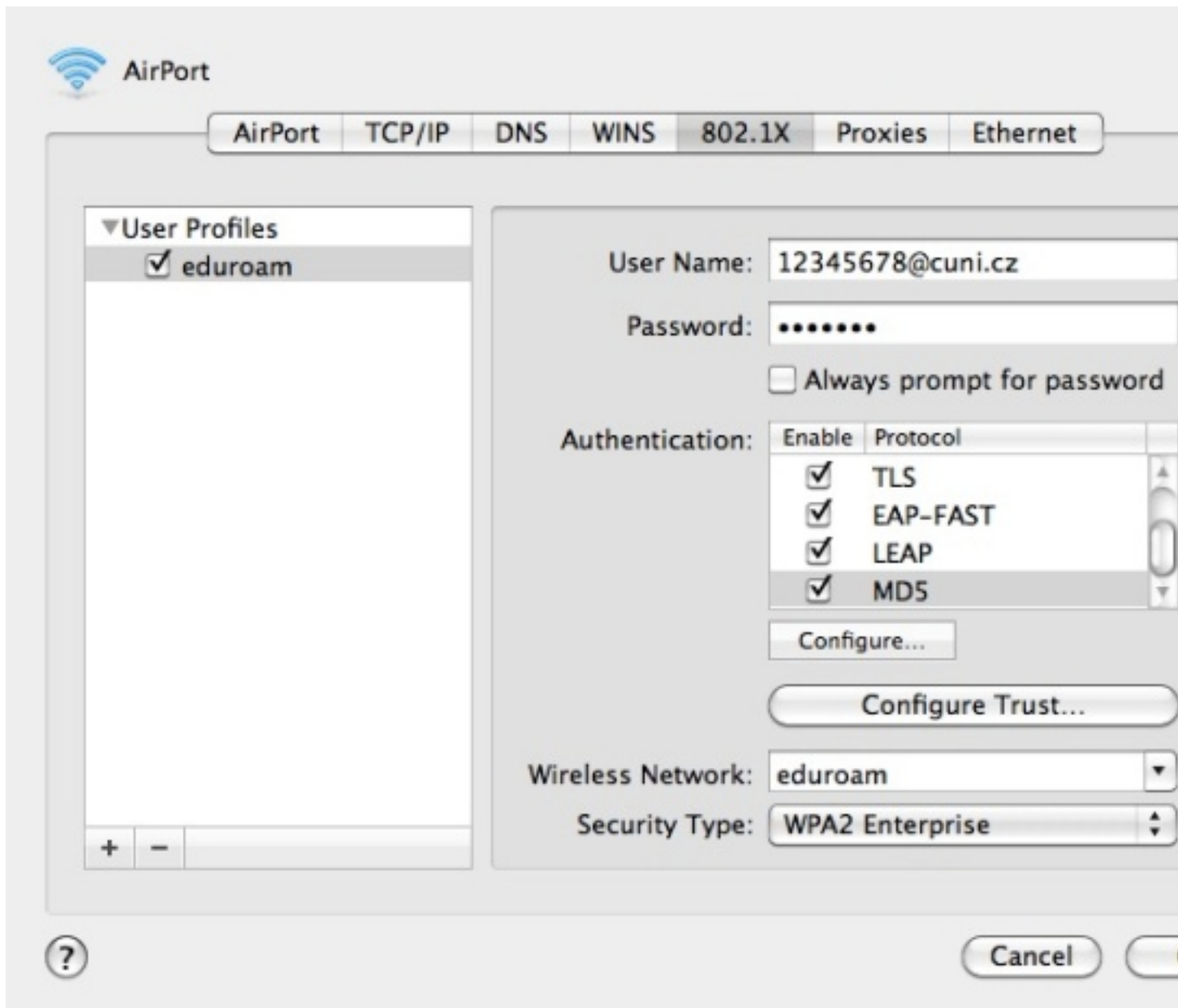
Choose **eduroam** among available WiFi networks.

**Setup for Mac OS X Snow Leopard or older Mac OS X versions:  
In System Preferences choose Network**

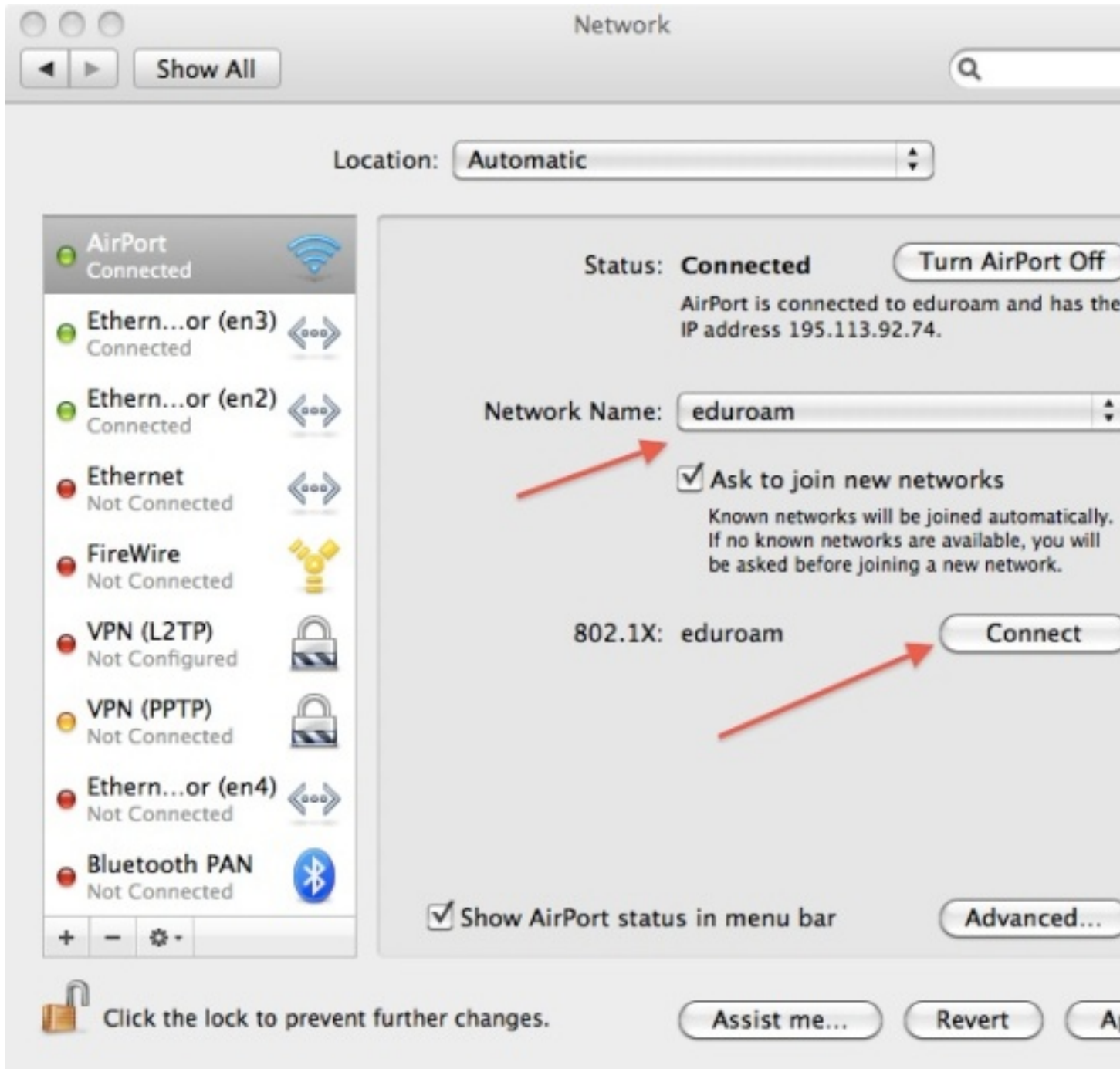


**In Advanced section create eduroam profile**





**In available WiFi networks list choose eduroam and wait a few seconds for authentication**



[Back to Main Page](#)

Name and *eduroam* logo are registered trademarks of the [TERENA](#) .