
How to connect - Windows 7



How to connect - Windows 7 and Vista

These instructions describe settings of Windows 7 and Vista operating system for connection to the wireless network **eduroam**. It is assumed that the user has the wireless network card drivers installed (mostly by the notebook manufacturer). Current driver version is recommended.

It is also assumed that the user's eduroam account is functional. Otherwise see the information available at [this page](#) .

Automatic configuration

You can use automatic configuration program [eduroamcuni3.exe](#) .

Click on the yellow box above the system tray and enter your username (including realm) and password.

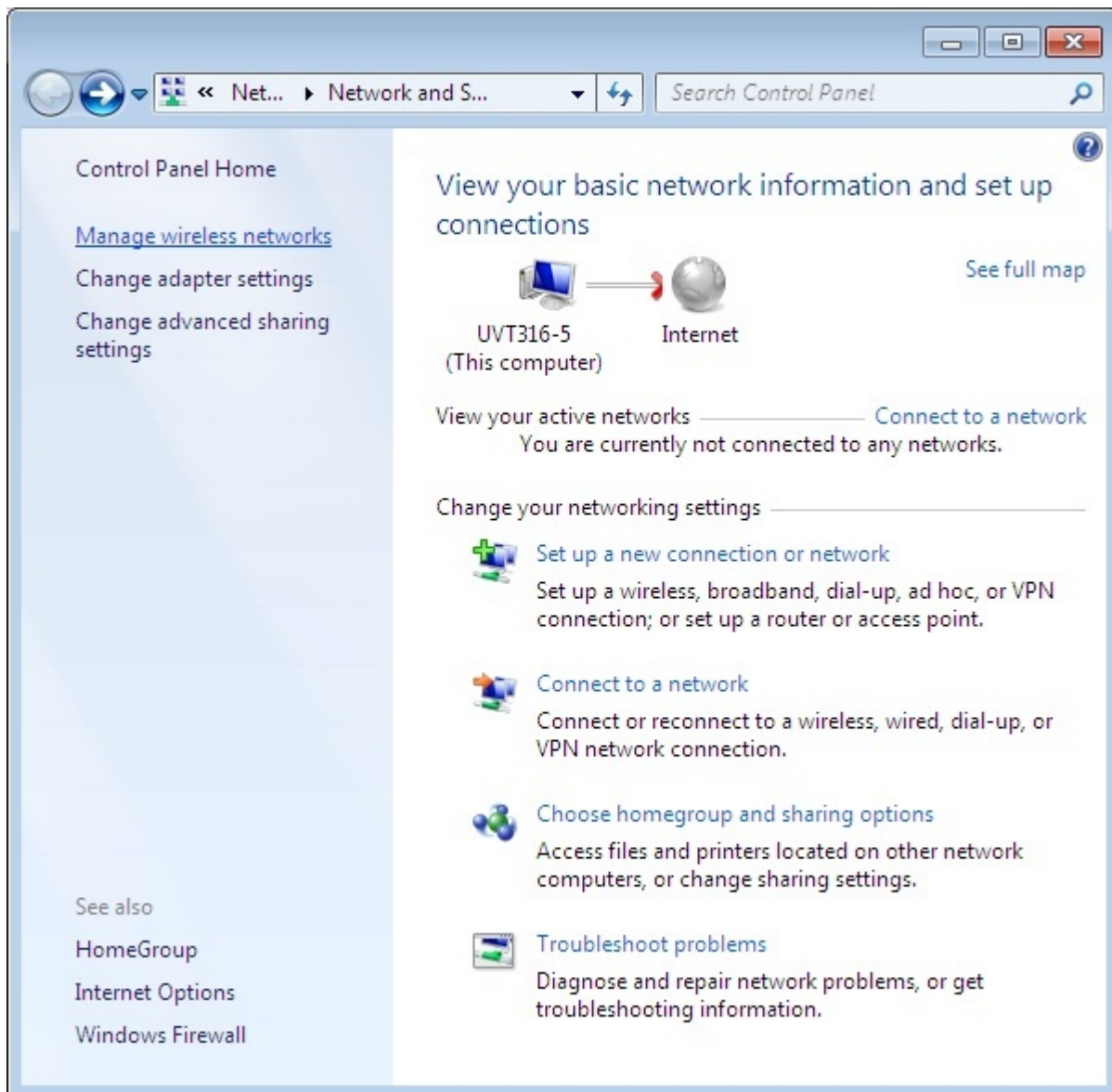
If this program doesn't work, please follow the instructions below.

Wireless Connection Configuration

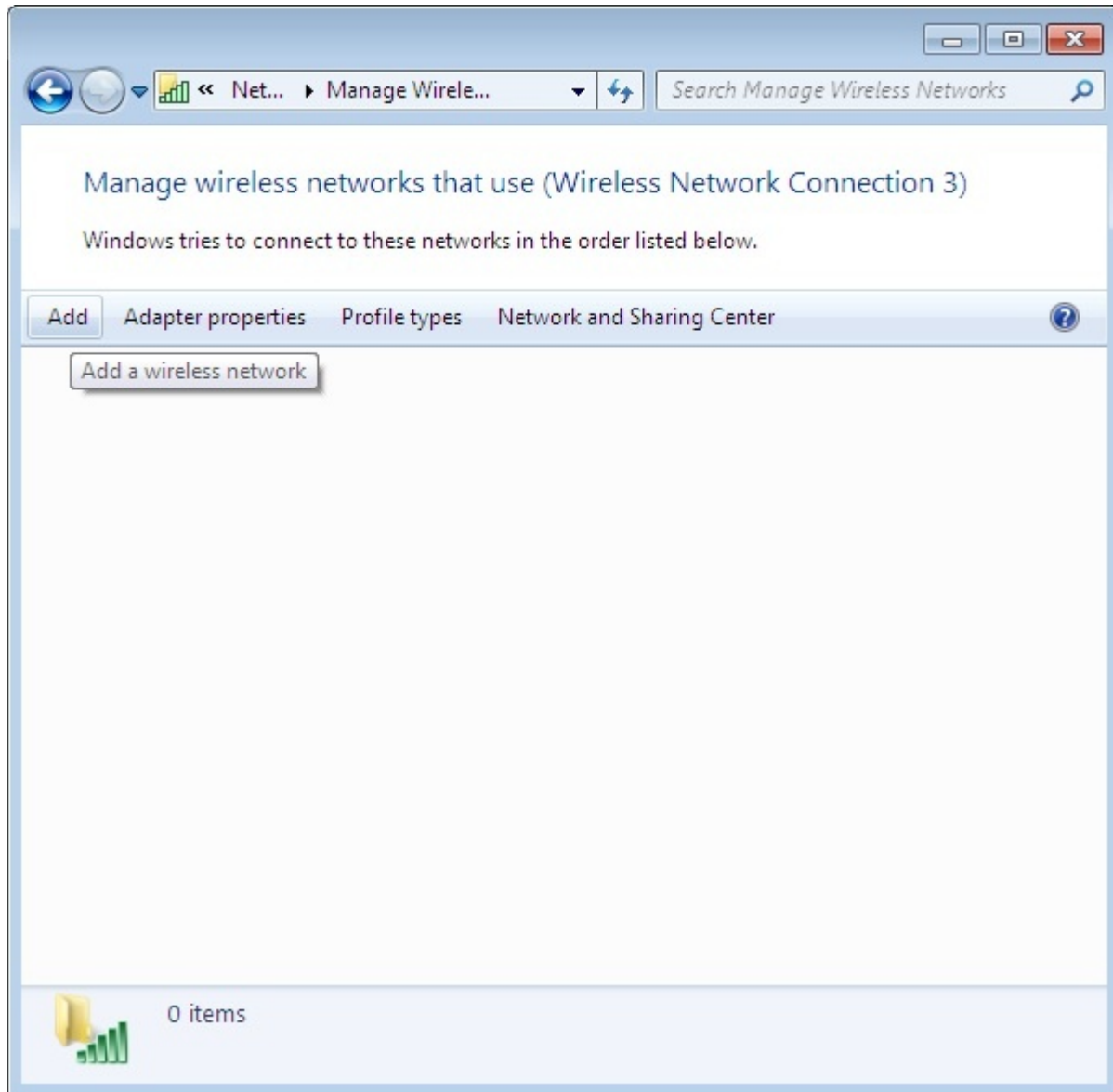
Click above the Wireless Connection icon on the taskbar (second from right) and select the *Open Network and Sharing Center* option.



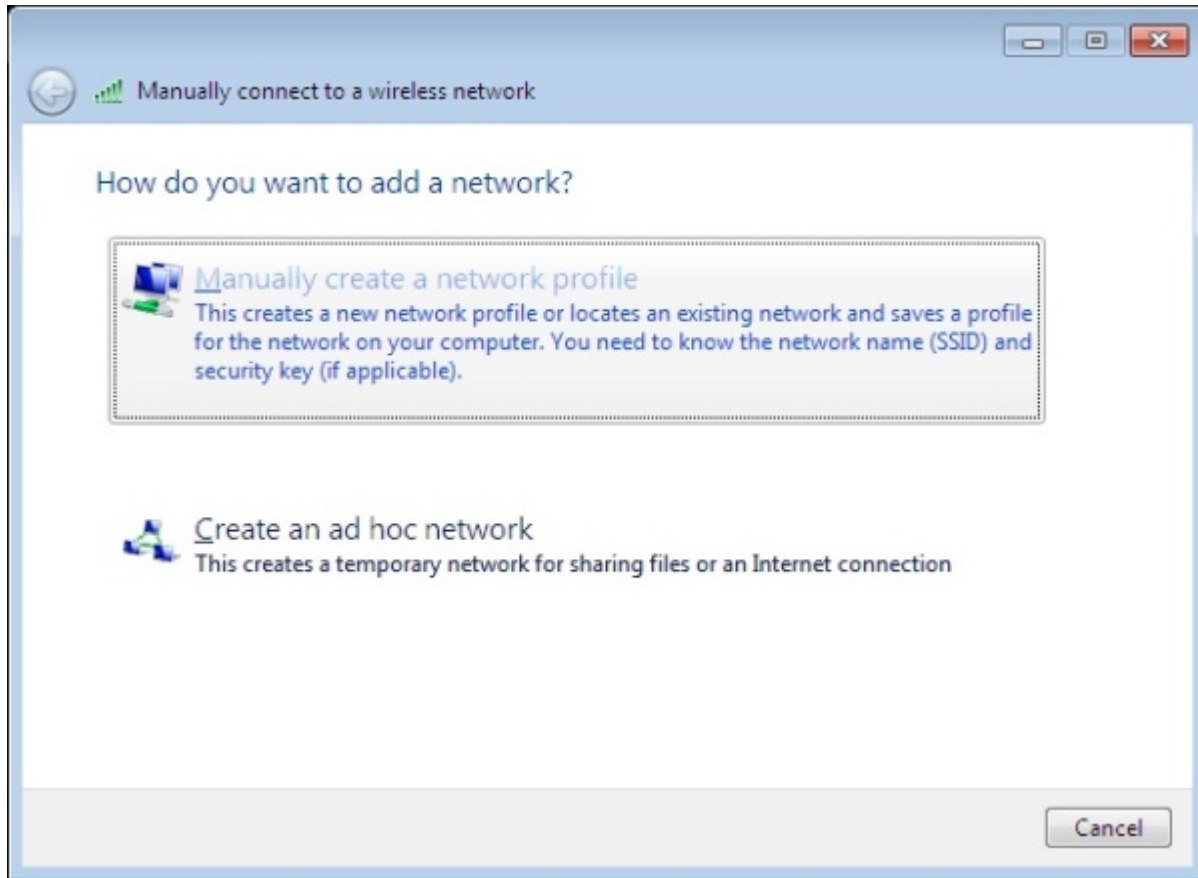
Click *Manage wireless networks* on left.



Click *Add* button.



Select *Manually create a network profile*.



Enter the *network name* and select WPA2/AES encryption. Then click *Next*.

Manually connect to a wireless network

Enter information for the wireless network you want to add

Network name:

Security type:

Encryption type:

Security Key: Hide characters

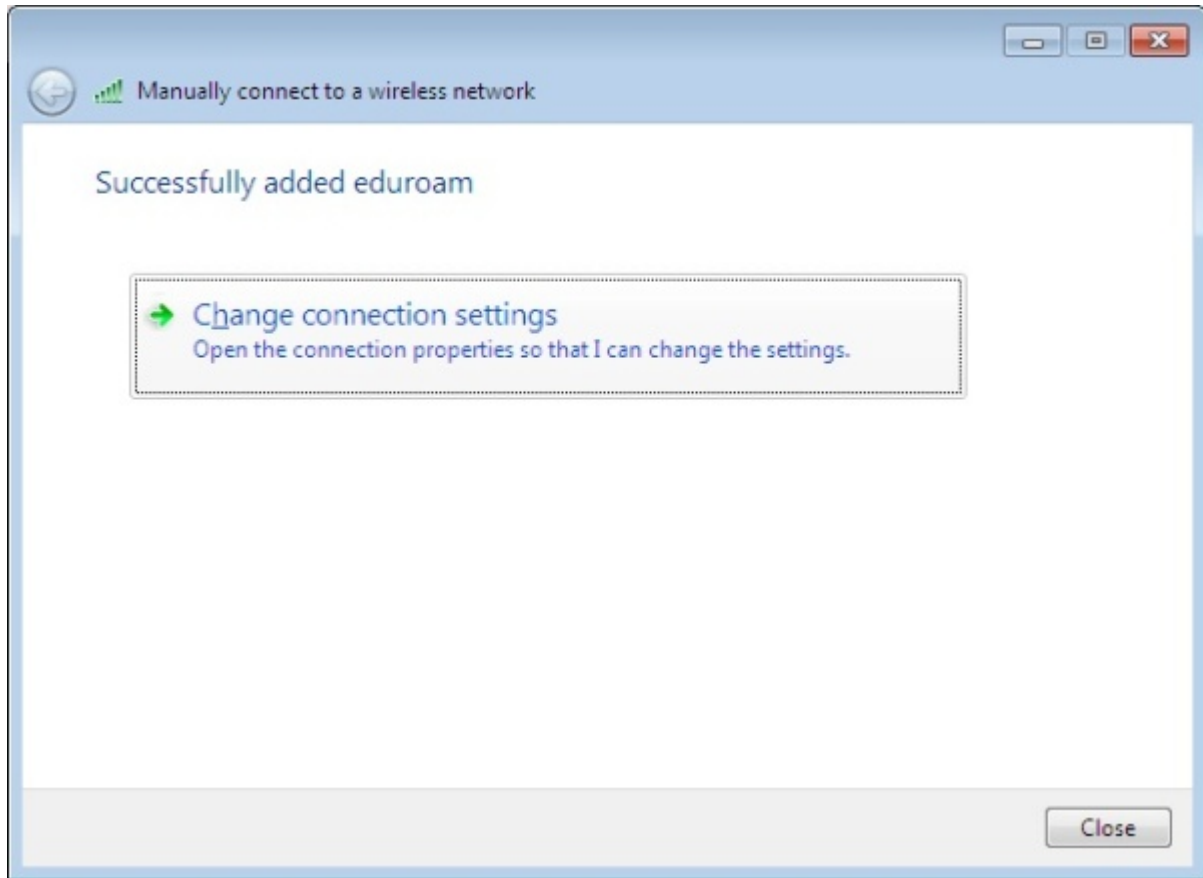
Start this connection automatically

Connect even if the network is not broadcasting

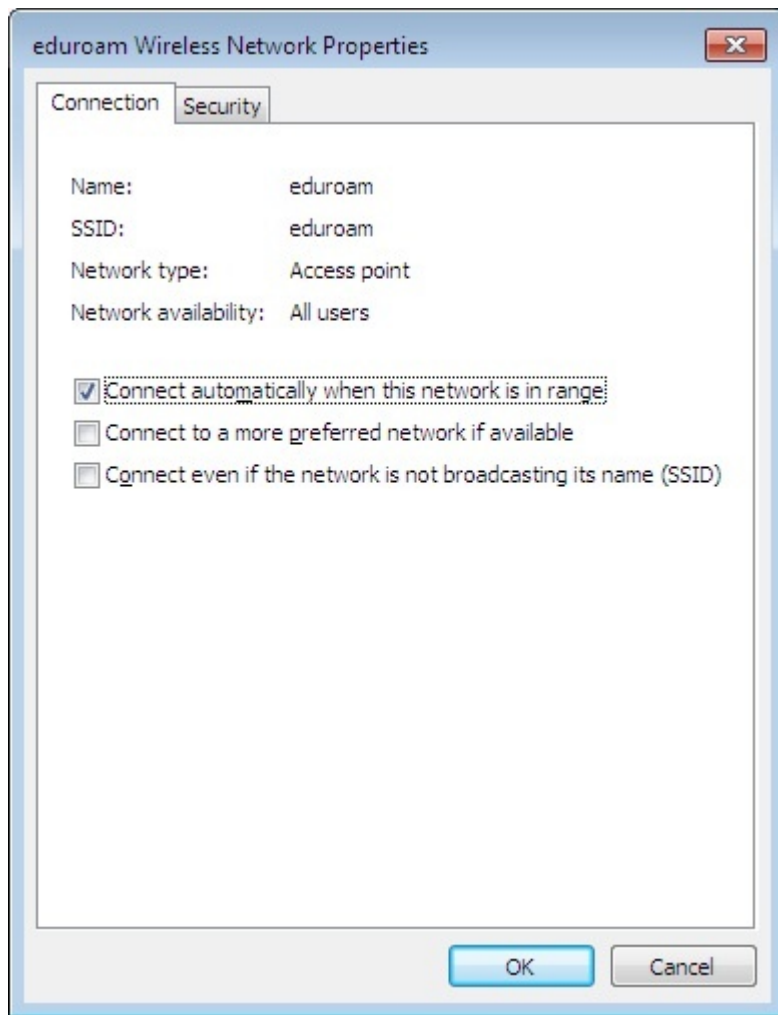
Warning: If you select this option, your computer's privacy might be at risk.

Next

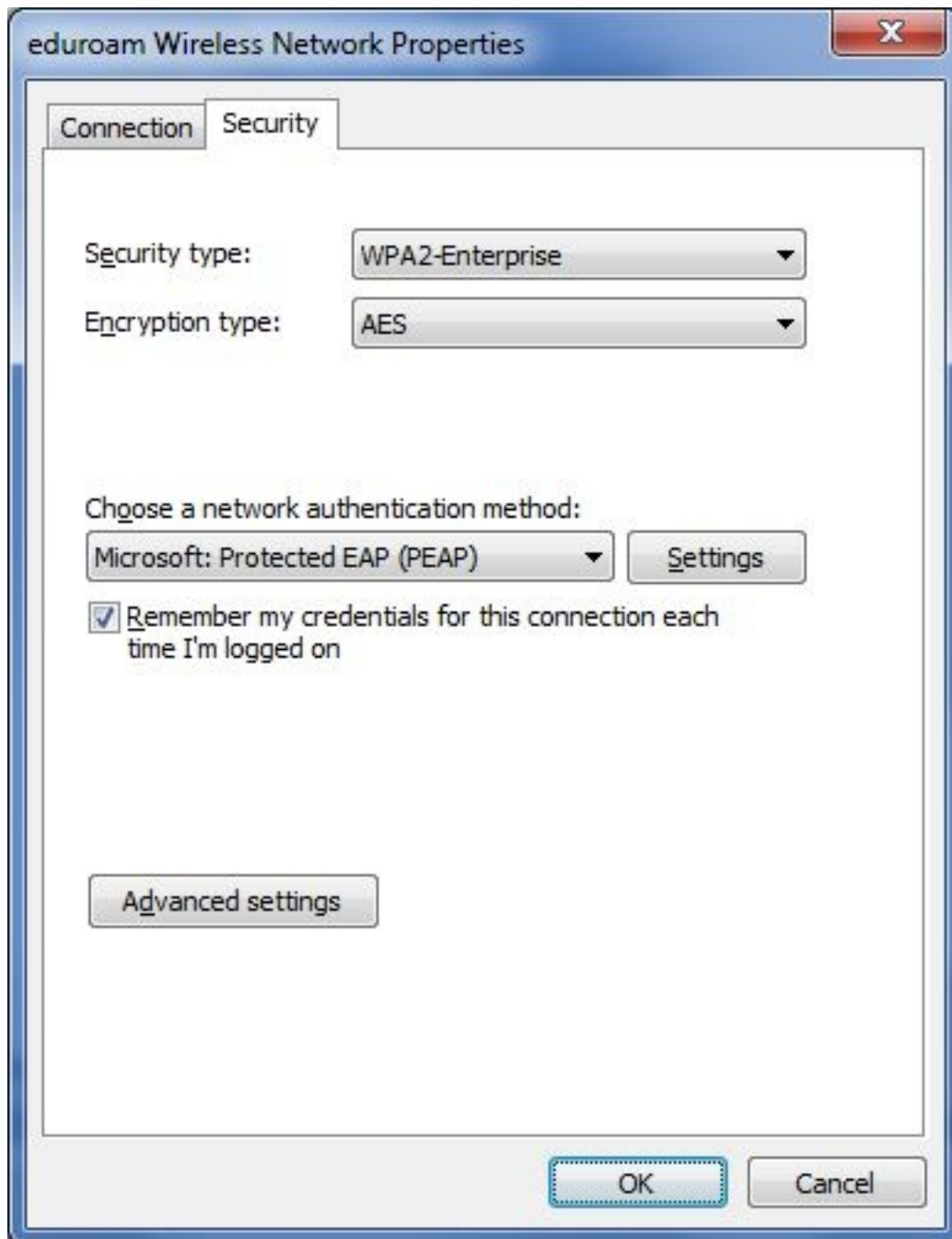
Click *Change connection settings*.



Select the *Security* tab.



Click *Settings* button.

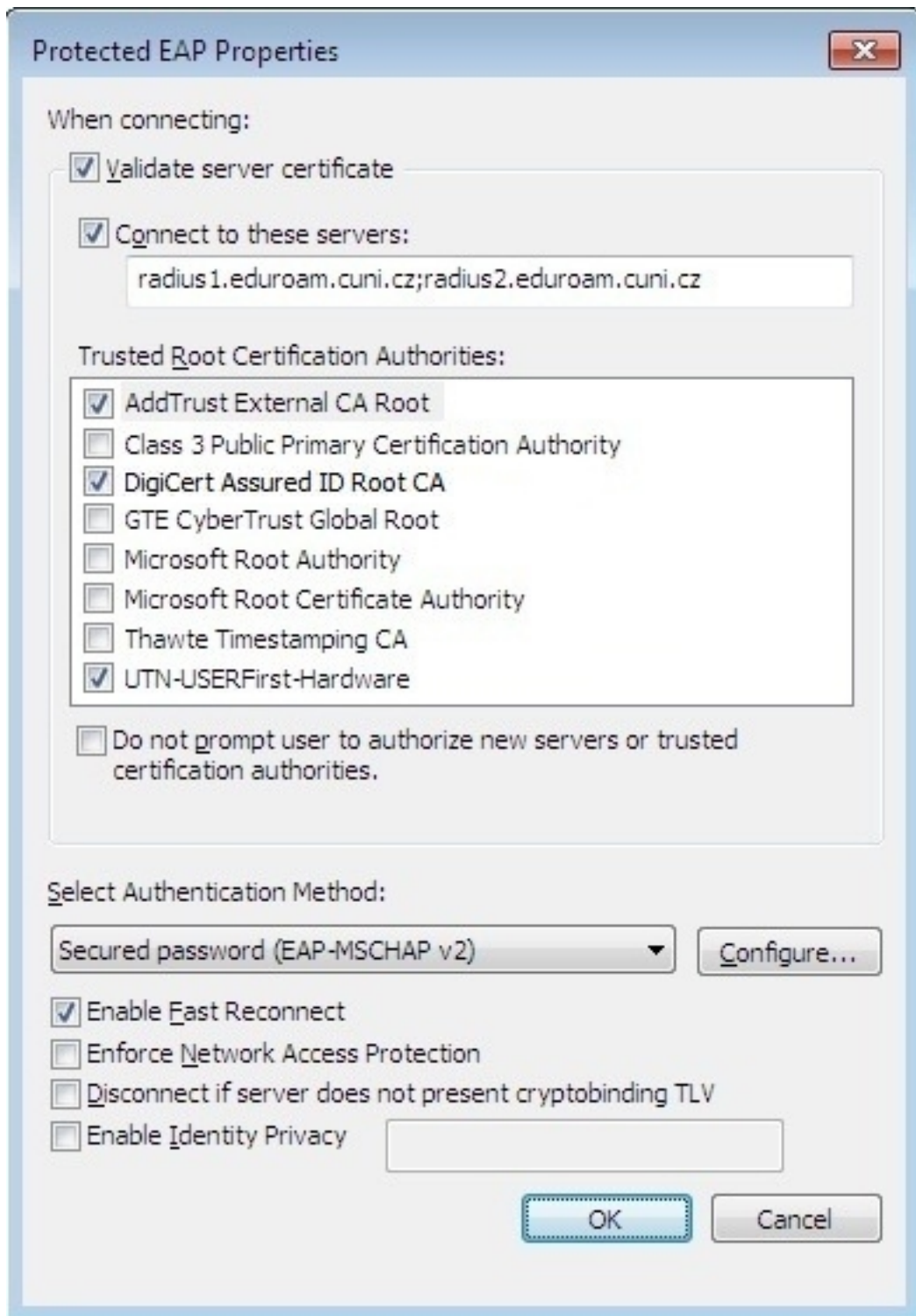


Activate the server certificate verification, enter semicolon separated names of RADIUS servers and select the certification authority according to the image.

Following RADIUS servers are addressed to users of the realms (domains) **cuni.cz**, **uvtuk.cuni.cz**, **jionice.cuni.cz**, **student.cuni.cz** and **staff.cuni.cz**:

- radius1.eduroam.cuni.cz
- radius2.eduroam.cuni.cz

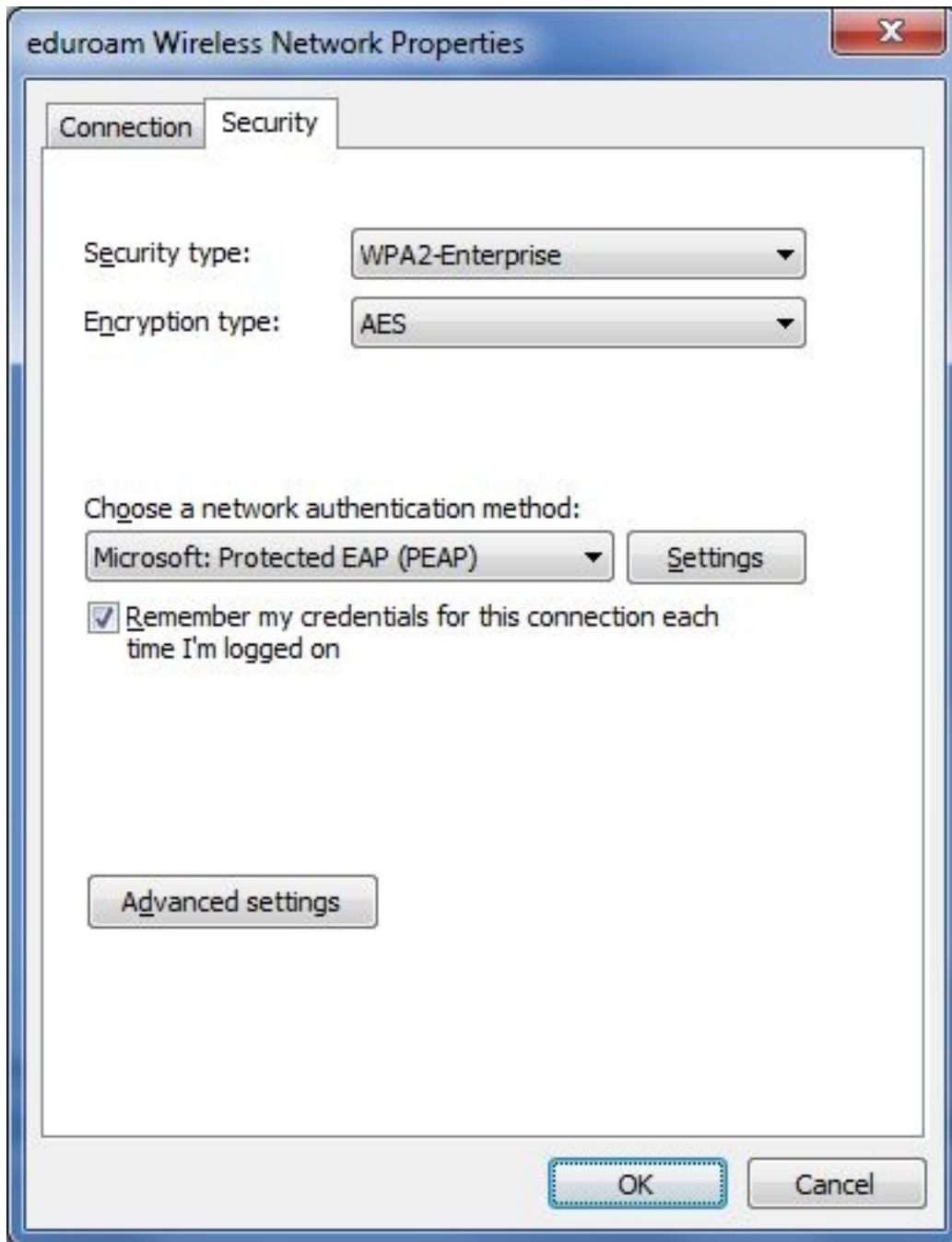
Then click *Configure* button.



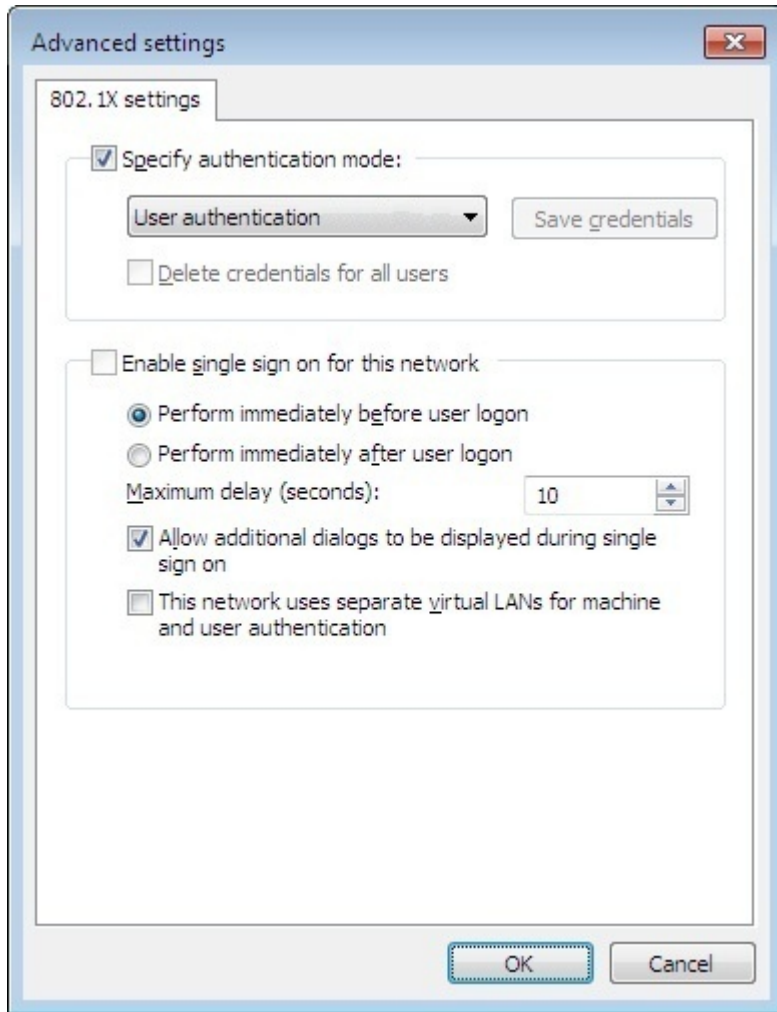
Cancel the option of automatic login name and password from OS. Press **OK** and subsequently confirm the remaining dialog boxes (2x **OK**).



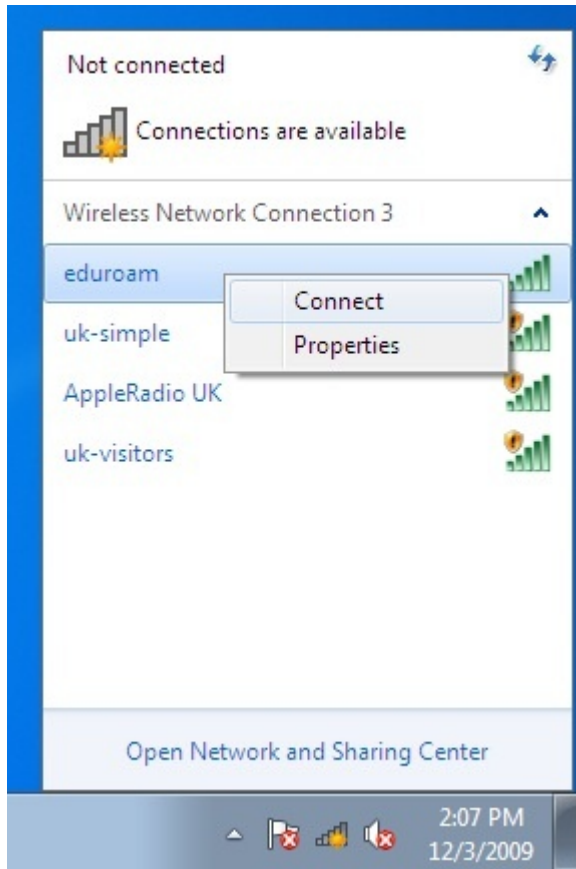
Click *Advanced settings*.



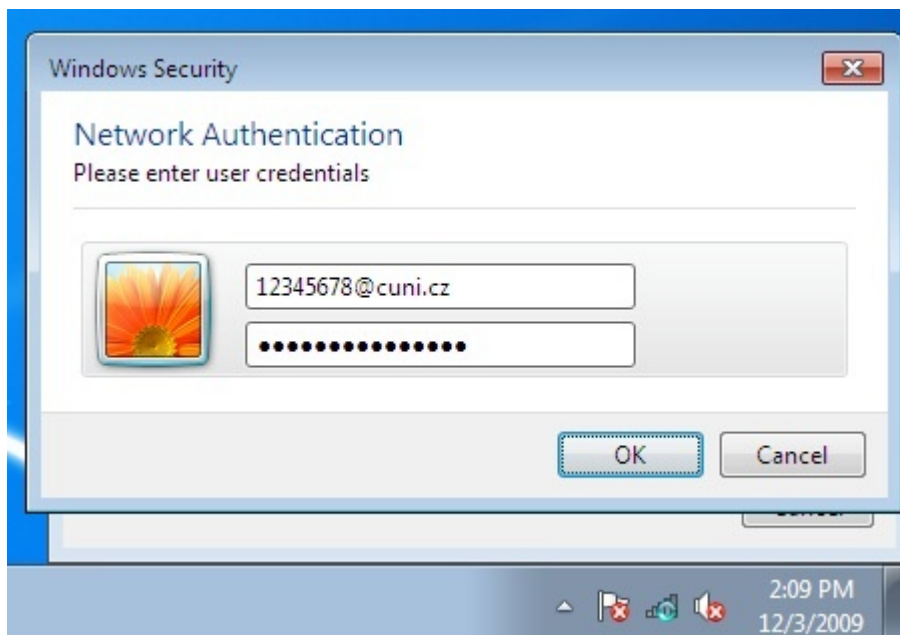
Set 802.1x options according to the image and press *OK* twice.



Click above the Wireless Connection icon on the taskbar (second from right), select the eduroam network (right click) and click *Connect*.



Enter your username including the realm (domain) and eduroam password. **Do not copy the example!!!** It is assumed that the user's eduroam account is functional. Otherwise see the information available at [access data](#) page.



If you have entered a correct name and password, information on successful connecting to **eduroam** network will be displayed.



Note the [supported services](#) . If something does not work, first consult the [supported services](#) page and make sure whether the operation is allowed within the network.

Username and password will be saved after a successful login and for the next connection it is not necessary to enter again the name and password.

[Back to Main Page](#)

Name and eduroam logo are registered trademarks of the [TERENA](#) .